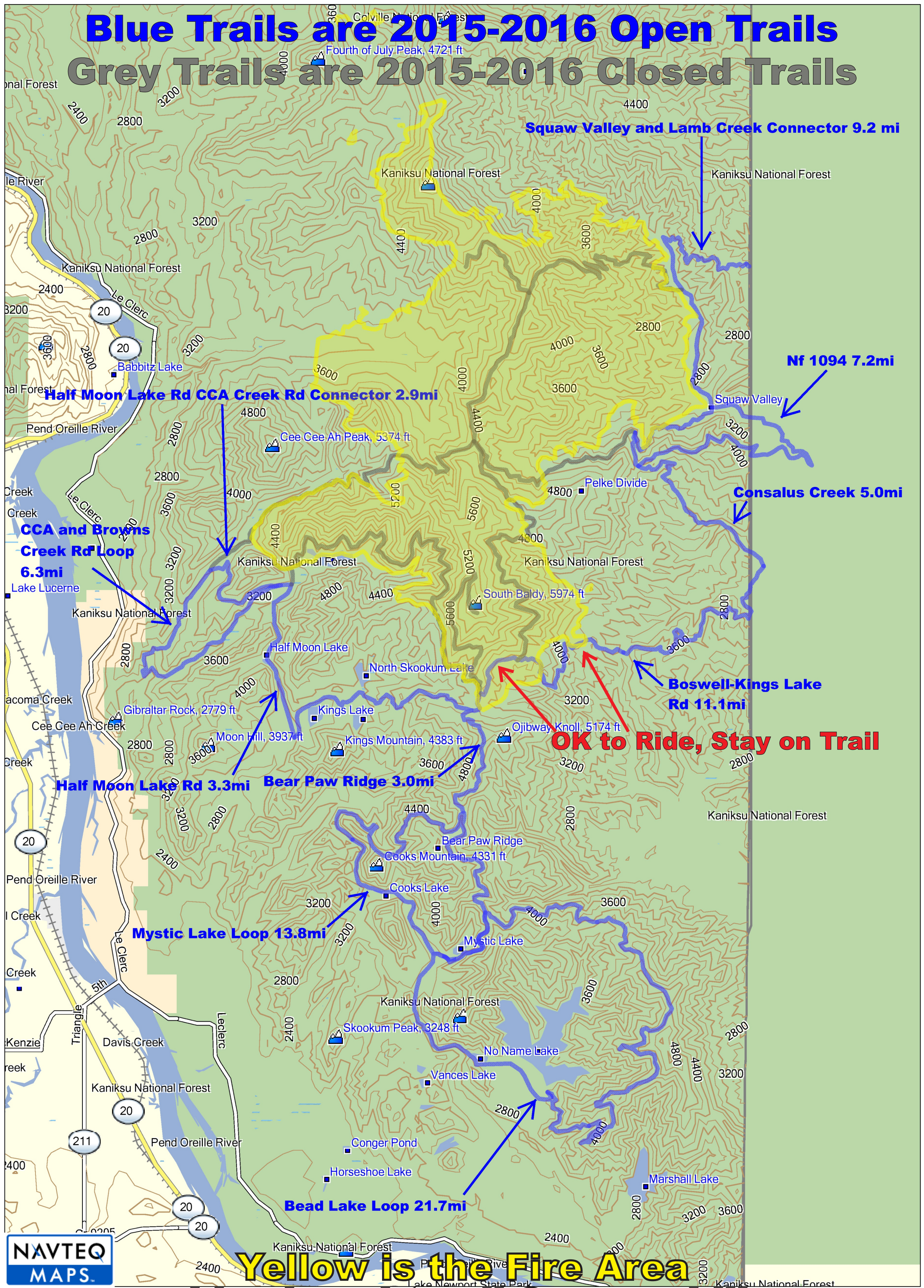


# Blue Trails are 2015-2016 Open Trails

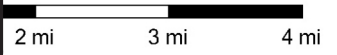
## Grey Trails are 2015-2016 Closed Trails



Topo U.S. 24K West  
© 2008 NAVTEQ. All Rights Reserved.  
© Garmin Ltd. or its Subsidiaries 1995-2009

### Yellow is the Fire Area and is closed to all Snowmobiling

Trails King's Lake 2015-2016



### 93.8 Total Blue Trail Miles Blue

